

New Fertility Development

BETA-3 INTEGRIN STUDY

At West Coast Fertility Centers, our scientists and staff are constantly searching for a way to increase our success rate. Embryo transfer and implantation process have become an integral part of improving the success rate of infertility treatment. Ultrasound guided transfer (Fig.a) is an important way to verify that embryos are being placed at correct location and that this location is indeed essential for establishing implantation.



Fig. a - Embryos, Catheter, Uterus

Integrins have a major role in endometrial receptivity. Beta 3 integrin can be found on the endometrium and on the blastocyst (Fig. b & c). This protein has been considered as specific to the “window of implantation.” Abnormal endometrial integrin beta 3 expression might be a major cause of unexplained infertility and also recurrent pregnancy loss.

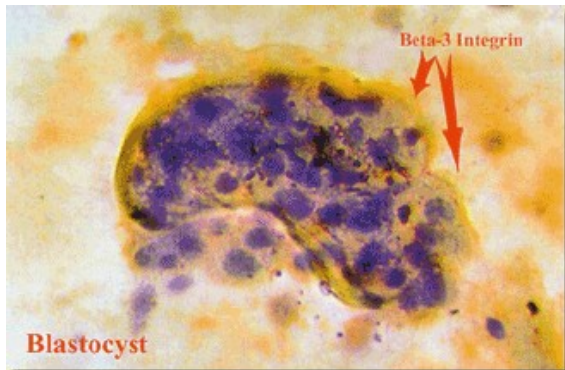


Fig. b - Blastocyst, Beta-3 Integrin

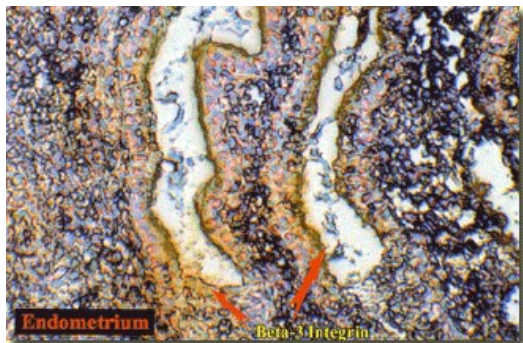


Fig. c - Endometrium, Beta 3 Integrin